

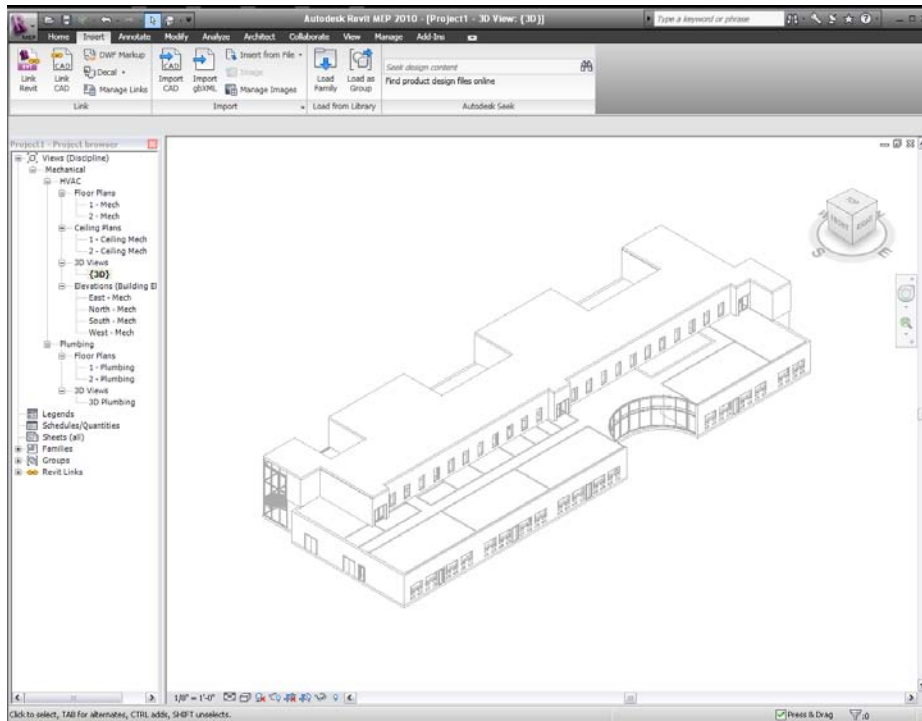
# Placing Air Terminal

## Abstract

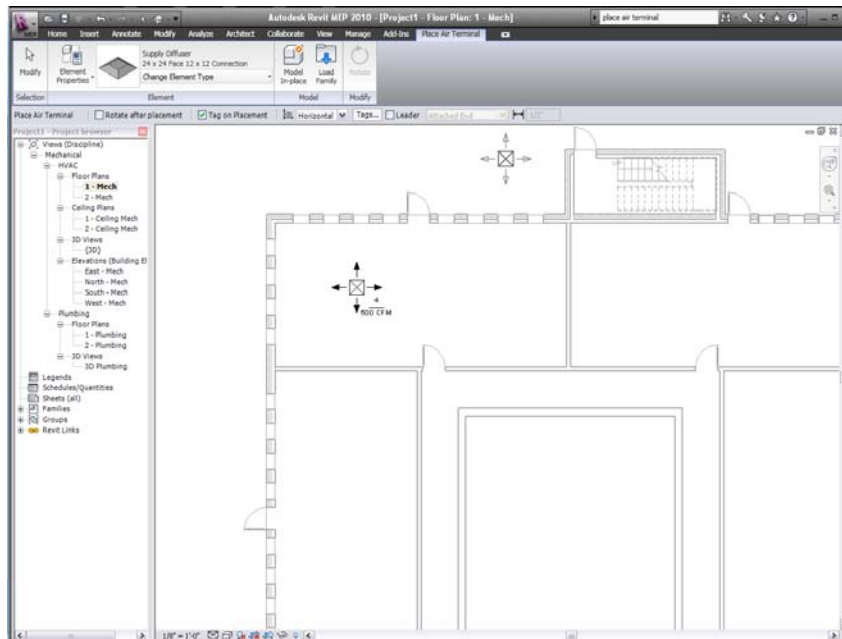
This document will provide a step-by-step process to place air terminals in Revit MEP

## Procedure

1. Link architectural file into Revit MEP file.

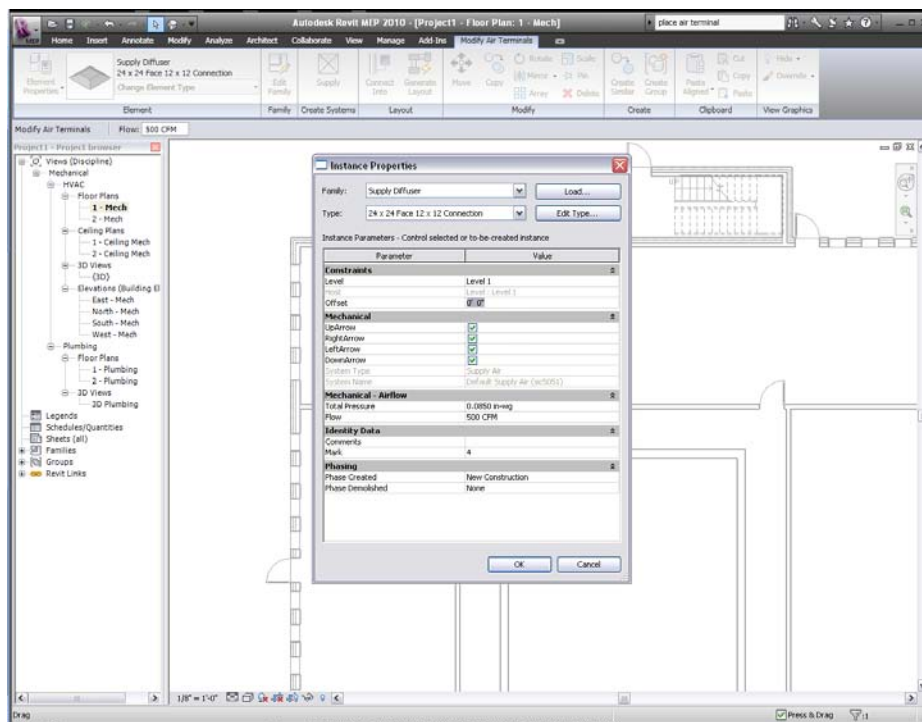


2. Go to floor plan
3. Place diffuser  
Click on Home tab ⇒ HVAC panel ⇒ Air Terminal ( place air terminal on the floor)  
Select air terminal type:  
Element panel ⇒ change Element Type

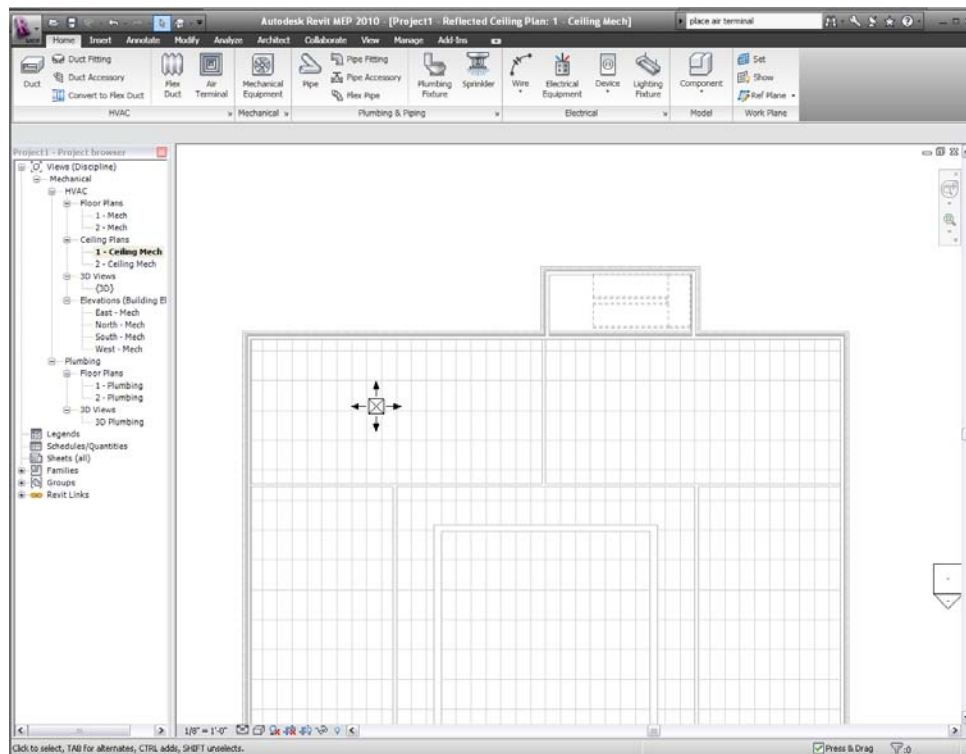


#### 4. Change elevation

Click air terminal, right click, and select element property. Change offset to ceiling height (ex: 9')



#### 5. Move the cursor to where you want to place the air terminal and click



## Lessons Learned:

If place the air terminal directly on the ceiling plan, it won't show up. You have to go back to the floor plan and change the offset of the air terminal to the ceiling height.